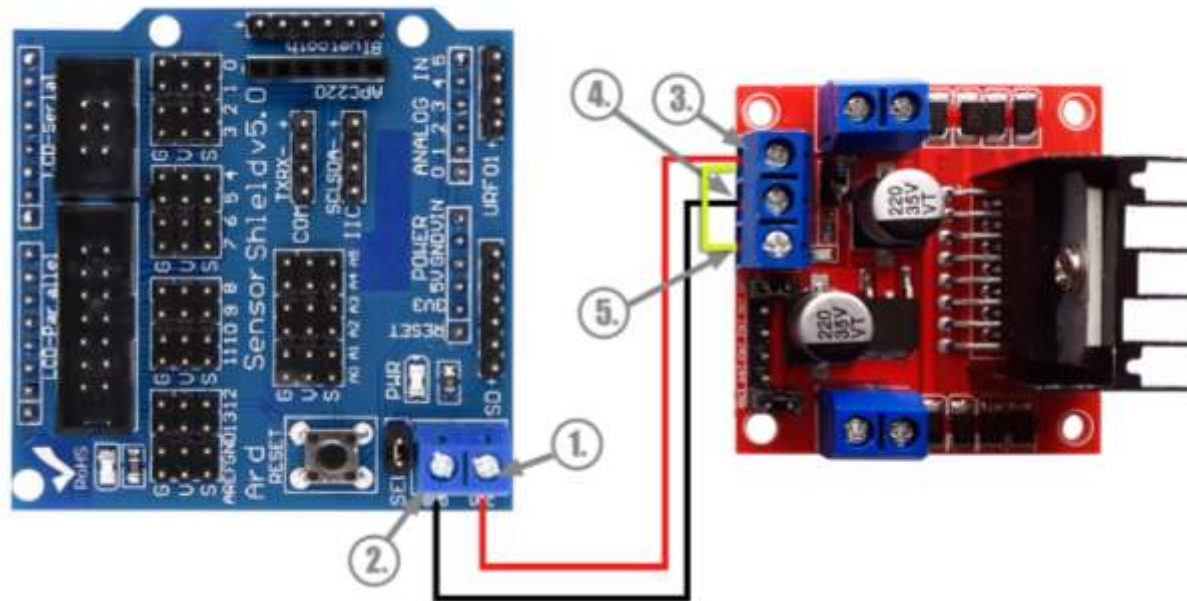


Connecting Arduino Shield to L298n DC Motor Driver



This diagram presents the circuit for providing power supply to the **L298n DC motor driver** through the Arduino Sensor Shield.

- Connect the 5V (1.) of Shield to the 12V (3.) of motor driver.
- Then connect the Shield's ground (2.) to motor's driver ground (4.).
- Finally, create a close circuit by connecting the 12V (3.) of motor driver to the 5V (5.).

Notes:

*For your convenience, you are advised to use three M-M pre-crimped jumper wires.*

*A small screwdriver will be also useful for connecting wires to the components.*

Notes: