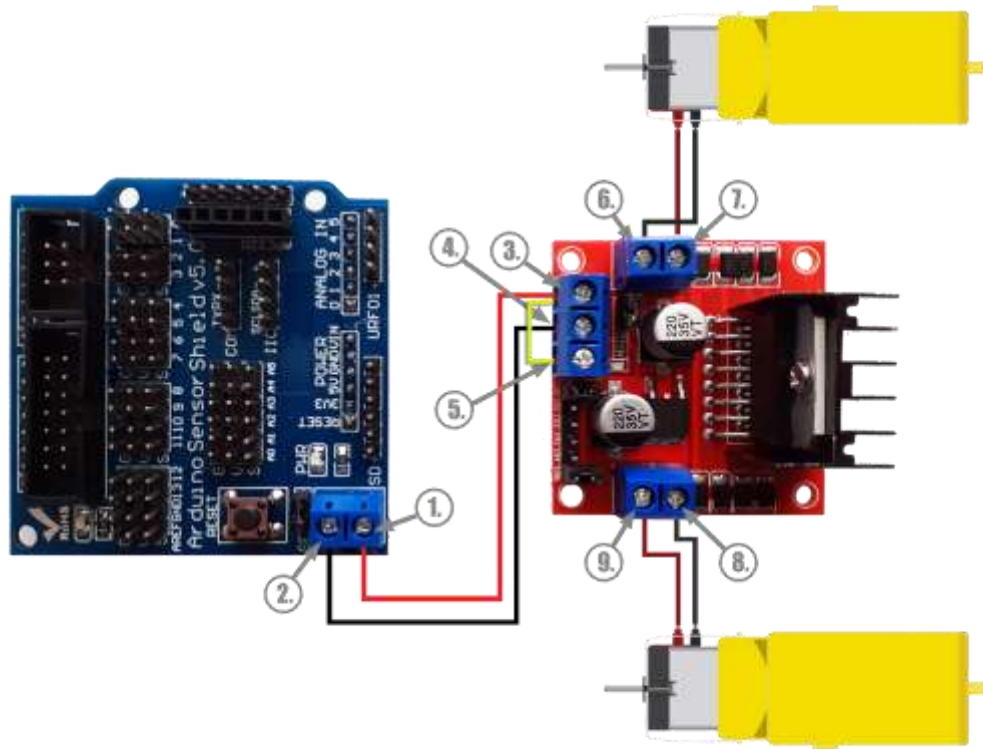


Connecting the DC Gear Motors to L298n driver



This diagram presents the way that the DC gear motors are connected to the L298n DC motor driver.

- Connect the pins for power to OUT1 (7.) and OUT3 (9.), and the pins for ground to OUT2 (6.) and OUT4 (8.).

Notes:

*If no wires are attached to the DC gear motors, then you will need four wires (or M-M jumpers) as well as soldering iron or hot glue gun, to attach them on the pins of the DC gear motors.*

*In this case, keep also in mind to symmetrically connect the wires (i.e. if you choose to connect Motor's A upper pin to power, you should also connect Motor's B upper pin to the corresponding power pin).*

Notes: