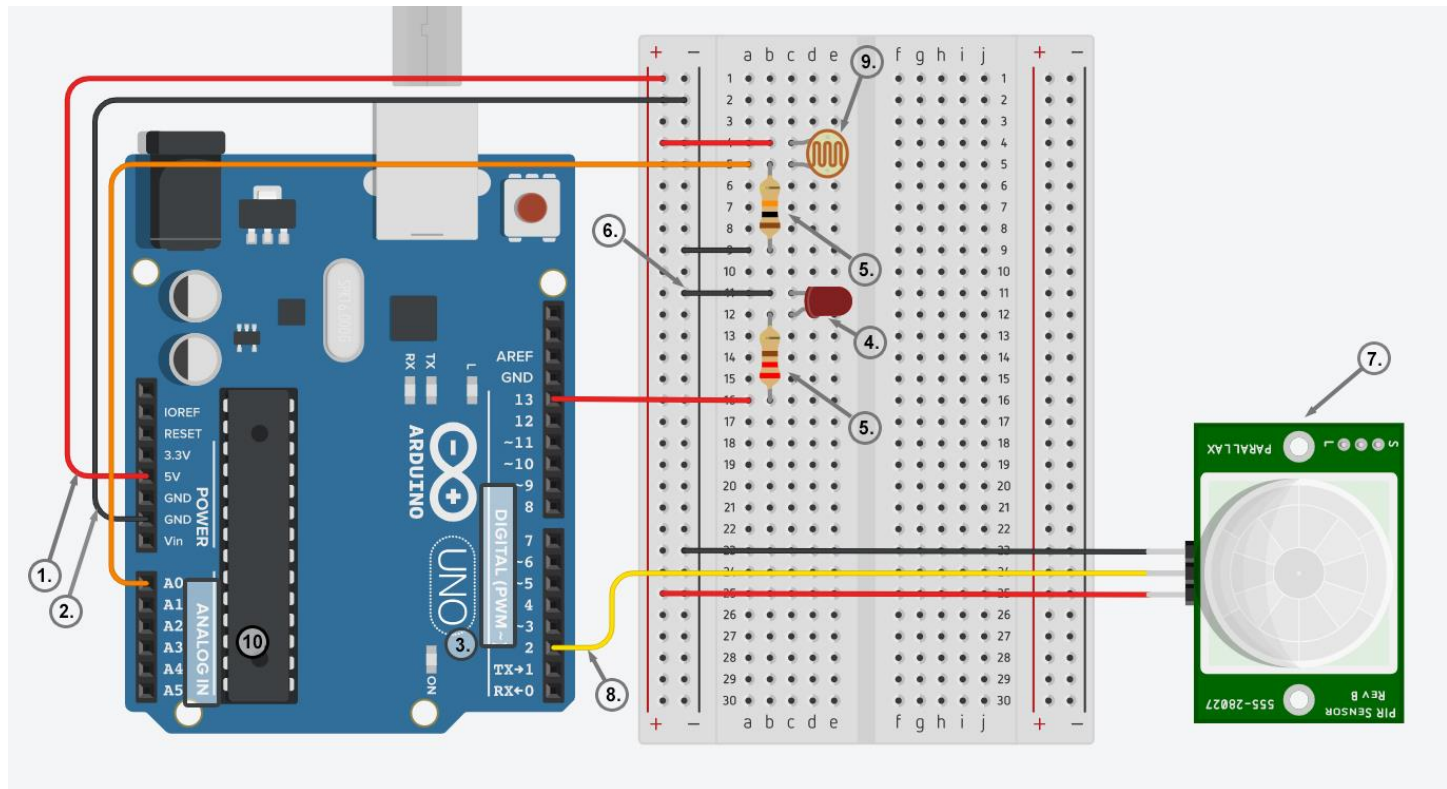


## Level 2: The smart light detects movement in the dark



- Use 5V (1) and Ground/ GND (2) pins to respectively provide 5V power and ground to your breadboard
- Use one of the digital pins (3) (pin 13 in the example) to connect the anode of your LED (4) through the resistor (5)
- Connect the cathode of your LED to ground (6) in order to create a closed circuit
- Use, again, one of the digital pins (3) (pin 2 in the example) to connect the signal pin (8) of your PIR sensor (7). Use the remaining two pins to provide 5V power and ground to your sensor.
- Connect one of photoresistor's (9) legs to power (5V), and the other to one of the analog pins (10) (pin A0 in the example), as well as to ground through the 10KΩ resistor (5).

Notes: