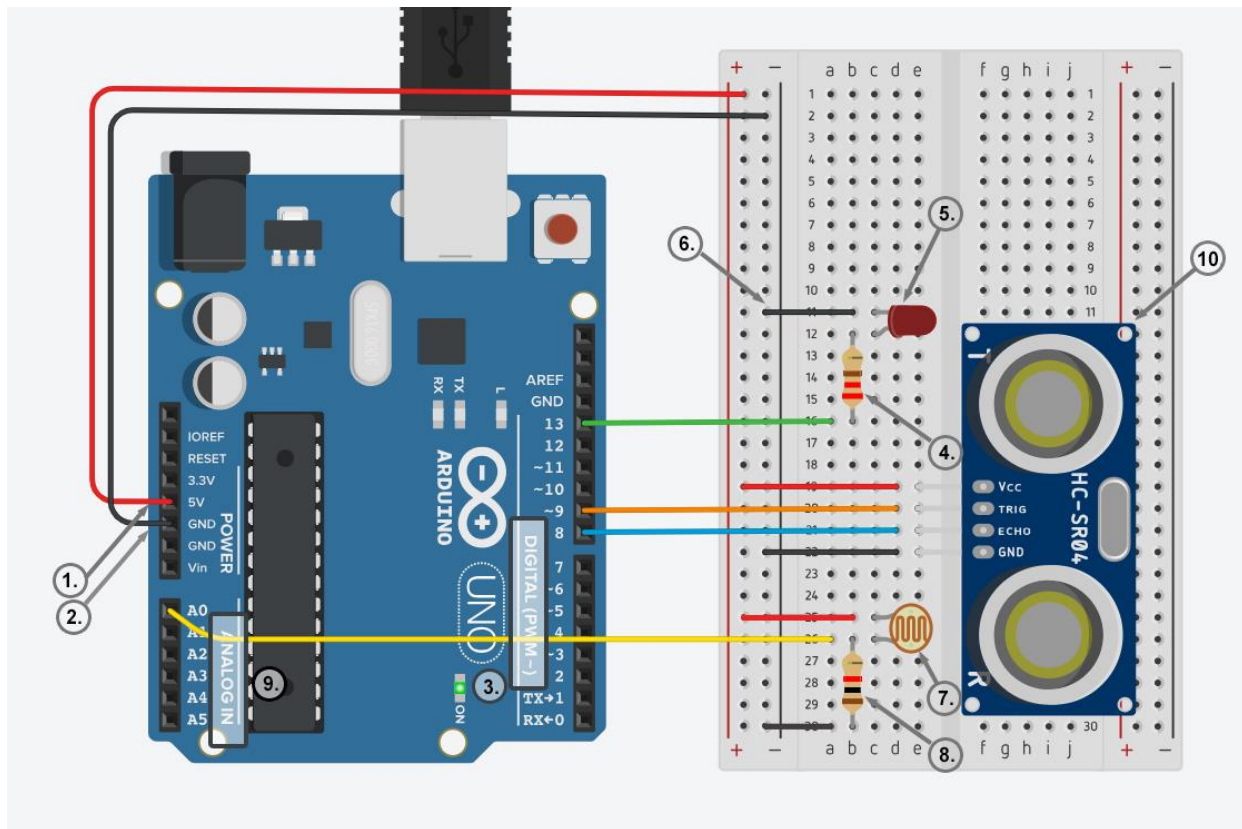


**Level 3: Make the led blink at different rates only at dark and according to the distance of the sailing ships**



- Use 5V (1) and Ground/ GND (2) pins to respectively provide 5V power and ground to your breadboard
- Use one of the digital pins (3) (pin 13 in the example) to connect the anode of your LED (5) through the resistor (4).
- Connect the cathode of your LED to ground (6) in order to create a closed circuit.
- Connect one of photoresistor's (7) legs to power (5V), and the other to one of the analog pins (9) (pin A0 in the example), as well as to ground through the 10KΩ resistor (8).
- Ultrasonic sensor (10) has four legs. Connect Vcc leg to 5V power, GND leg to ground, while Trigger and Echo legs to digital pins 9 and 8 respectively.

Notes: